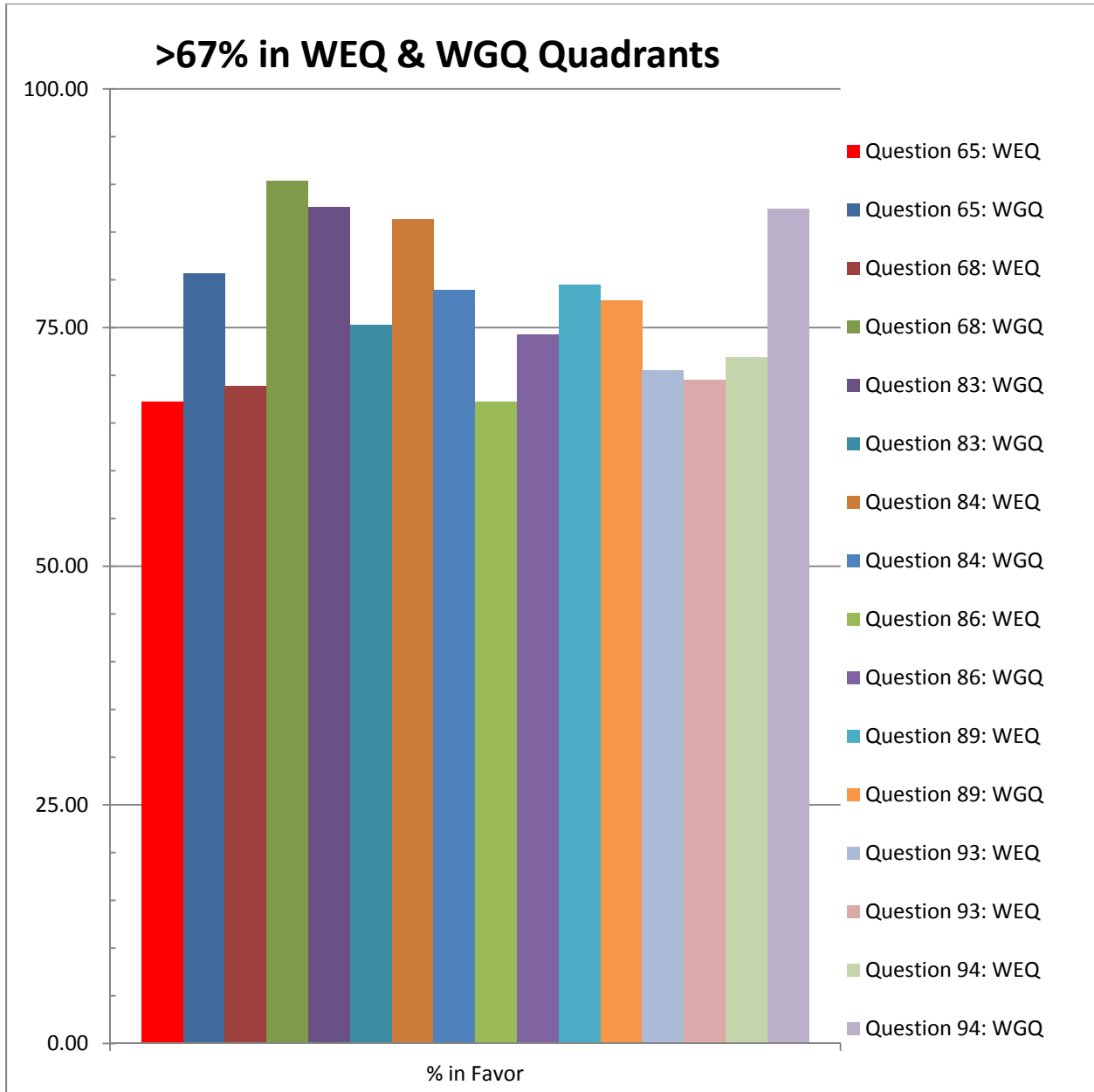
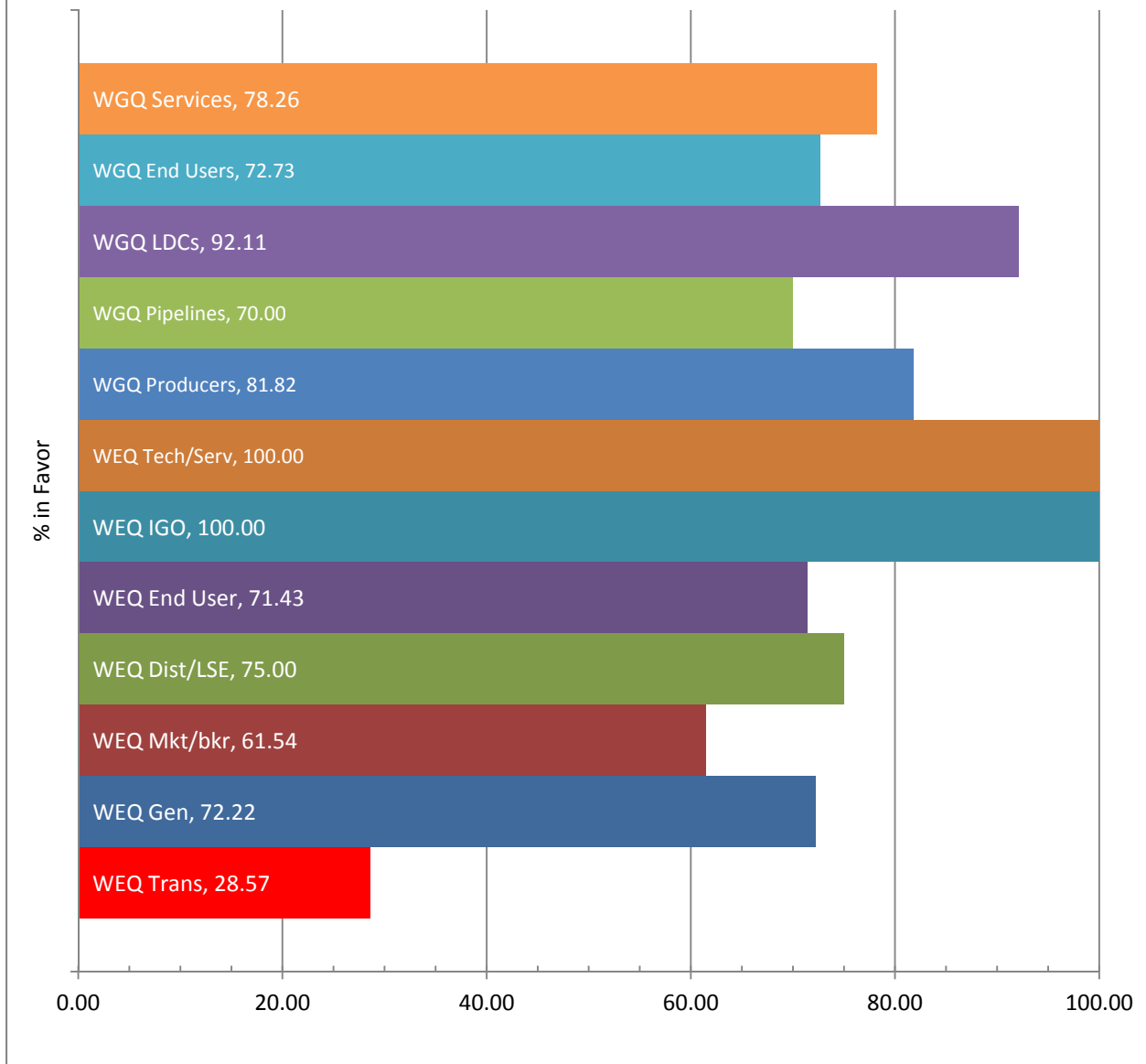


## 8 Segment Motions with >67% in both Quadrants



<b>8 Segment motions Garnered &gt;67% of Segment Votes in both Quadrants, but 3 Motions (Questions #65, 83, 89) Fail 40% Segment Threshold</b>	
Question 65:	<b>WEQ End User Segment Motion - Fails WEQ Transmission</b>
	(i.) MOTION 1: The minimum time between the posting of scheduled quantity (i.e. scheduling deadline) and the nomination deadline for all successive cycles in the same Gas Day should be no less than 1.5 hours. [i.e., There should be no scheduling overlap.]
Question 68:	<b>WEQ Generation Segment Motion</b>
	(i.) MOTION 1: The no bump rule must be retained for flowing gas after 9:00PM Central.
Question 83:	<b>WGQ Local Distributions Company Segment Motion - Fails WEQ Generator &amp; IGO</b>
	(i.) MOTION 1: No more than 3 Intraday Cycles, with (1) the first Nomination Deadline for any cycle no earlier than 9:00 am CCT, (2) the last Schedule Issued for any cycle no later than 11:00 pm CCT, and (3) a minimum 1.5 hours Reaction Time.
Question 84:	<b>WGQ Local Distributions Company Segment Motion</b>
	(ii.) MOTION 2: The natural gas day will not have any more than three intra-day cycles.
Question 86:	<b>WGQ Local Distributions Company Segment Motion</b>
	(i.) MOTION 1: For the standard NAESB cycles, the minimum processing time between the Timely Nomination Deadline and the Timely Scheduling Deadline shall be 4 hours. Furthermore, the minimum processing time between the Nomination Deadline and the Scheduling Deadline for all additional standard NAESB cycles shall be 3 hours
Question 89:	<b>WGQ Producer Segment Motion – Fails WEQ Generator</b>
	(i.) MOTION 1: Allow only three intraday nomination cycles.
Question 93:	<b>WGQ Services Segment Motion -</b>
	(ii.) MOTION 2: Final intraday cycle must be “no-bump”
Question 94:	<b>WGQ Services Segment Motion</b>
	(iii.) MOTION 3: There should be 3 Intraday (affecting within Gas Day flows) nomination cycles. The timing of such nomination cycles to be determined. The timing of changes in Gas Flow from such cycles to be determined.

## Question 65 - Segment Motion **Fails >40%**



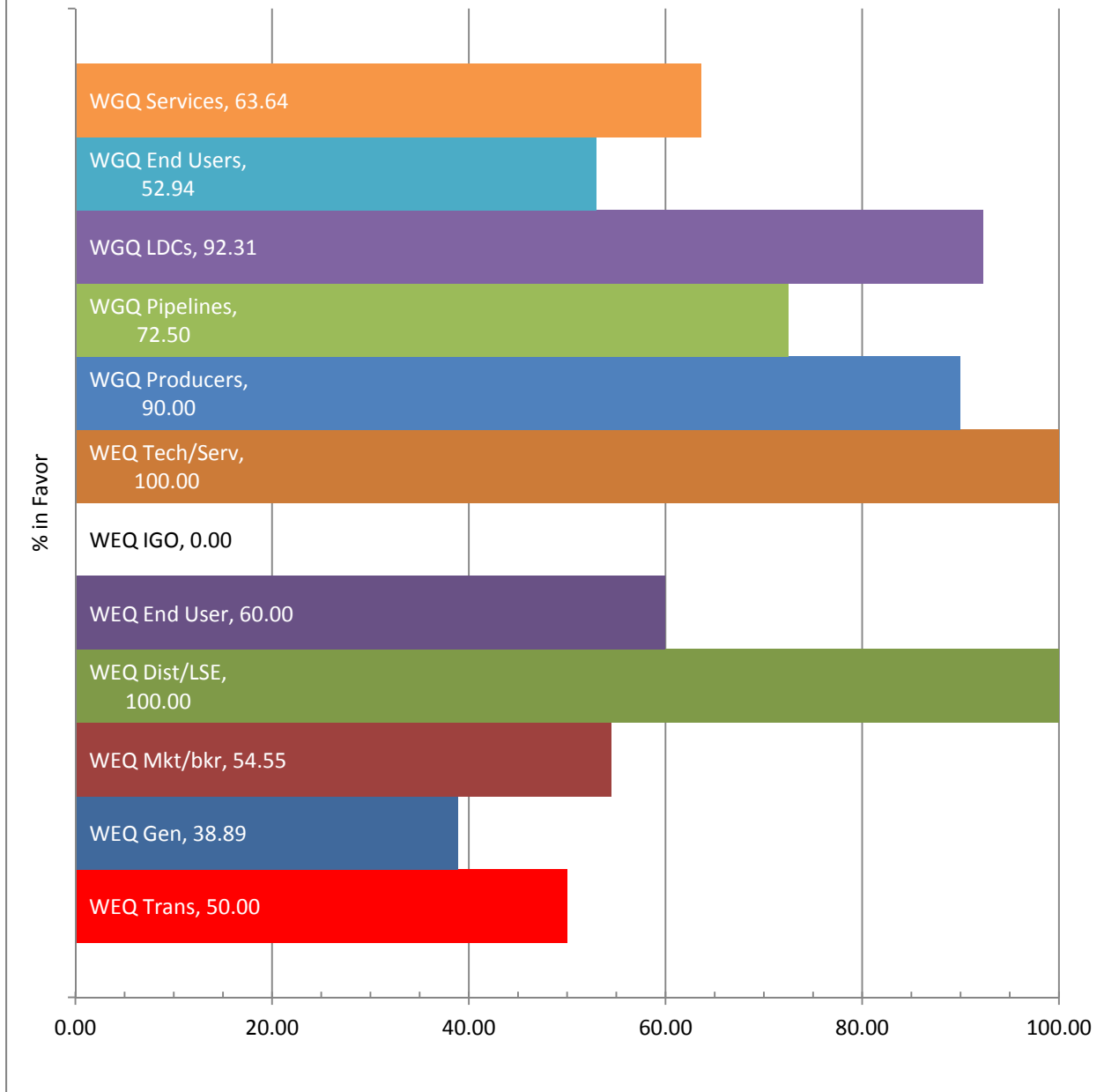
### 8 Segment motions Garnered >67% of Segment Votes in both Quadrants

### 3 Motions/Questions Failing 40% Segment Threshold

#### Question 65: **WEQ End User Segment Motion - Fails WEQ Transmission**

(i.) MOTION 1: The minimum time between the posting of scheduled quantities (i.e. scheduling deadline) and the nomination deadline for all successive cycles in the same Gas Day should be no less than 1.5 hours. [i.e., There should be no scheduling overlap.]

## Question 83 - Segment Motion Fails >40%



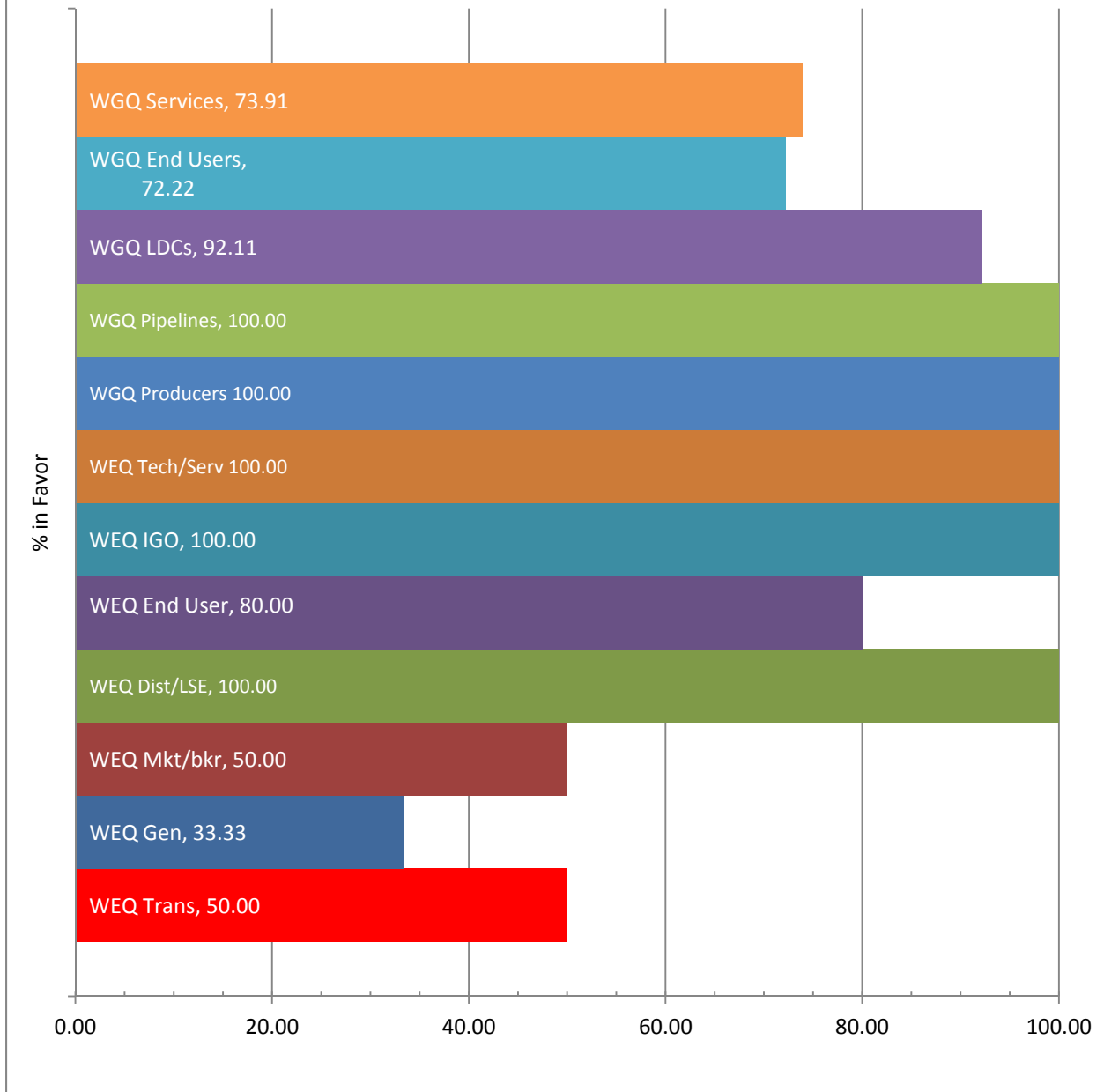
### 8 Segment motions Garnered >67% of Segment Votes in both Quadrants

#### 3 Motions/Questions Failing 40% Segment Threshold

**Question 83: WGQ Local Distributions Company Segment Motion - Fails WEQ Generator & IGO**

- (i.) MOTION 1: No more than 3 Intraday Cycles, with (1) the first Nomination Deadline for any cycle earlier than 9:00 am CCT,
- (2) the last Schedule Issued for any cycle no later than 11:00 pm CCT, and
- (3) a minimum 1.5 hours Reaction Time.

## Question 89 - Segment Motion **Fails >40%**



**8 Segment motions Garnered >67% of Segment Votes in both Quadrants**

**3 Motions/Questions Failing 40% Segment Threshold**

**Question 89: WGQ Producer Segment Motion – Fails WEQ Generator**

(i.) MOTION 1: Allow only three intraday nomination cycles.