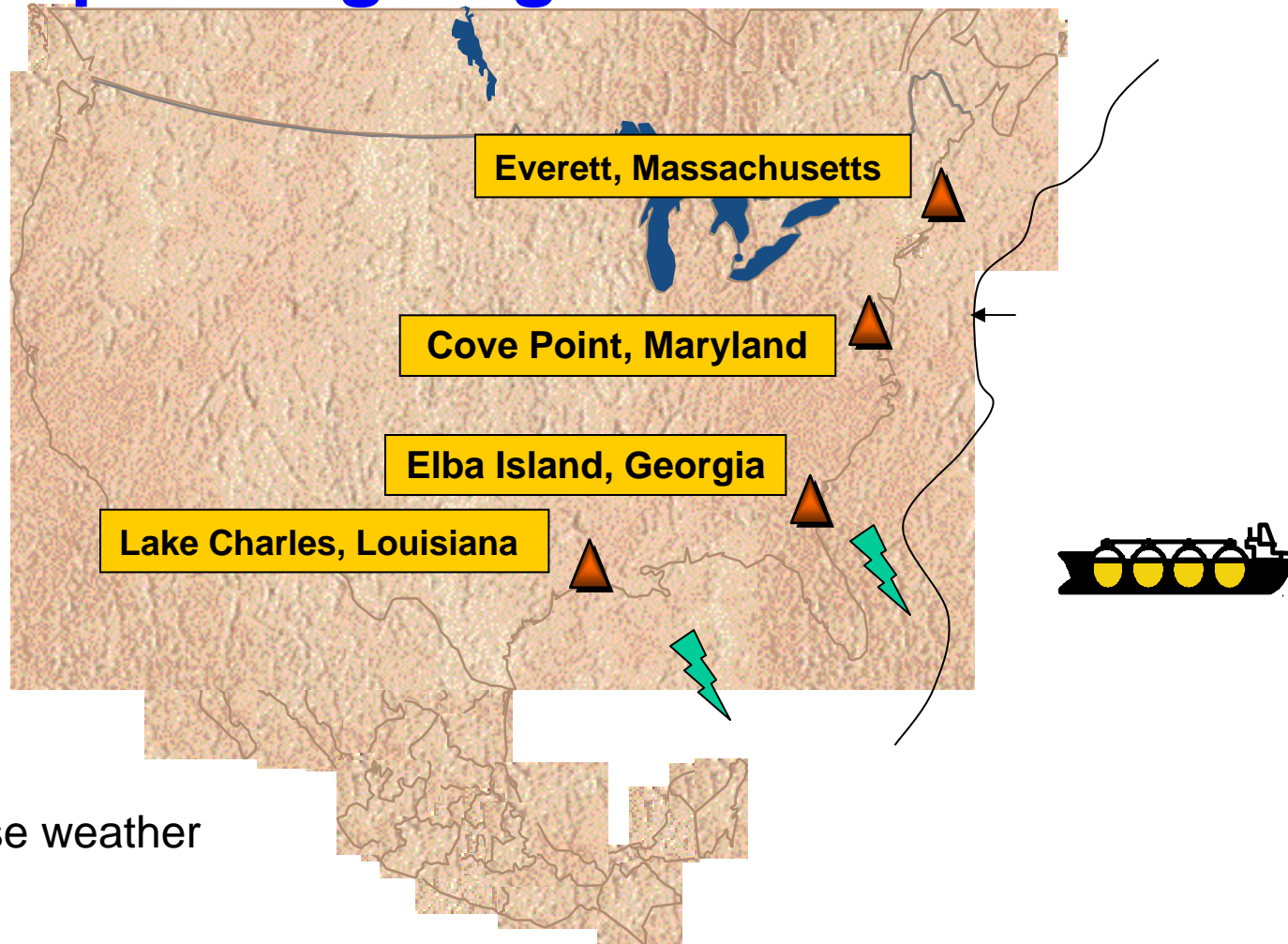


The Key Zones affected by Force Majeure

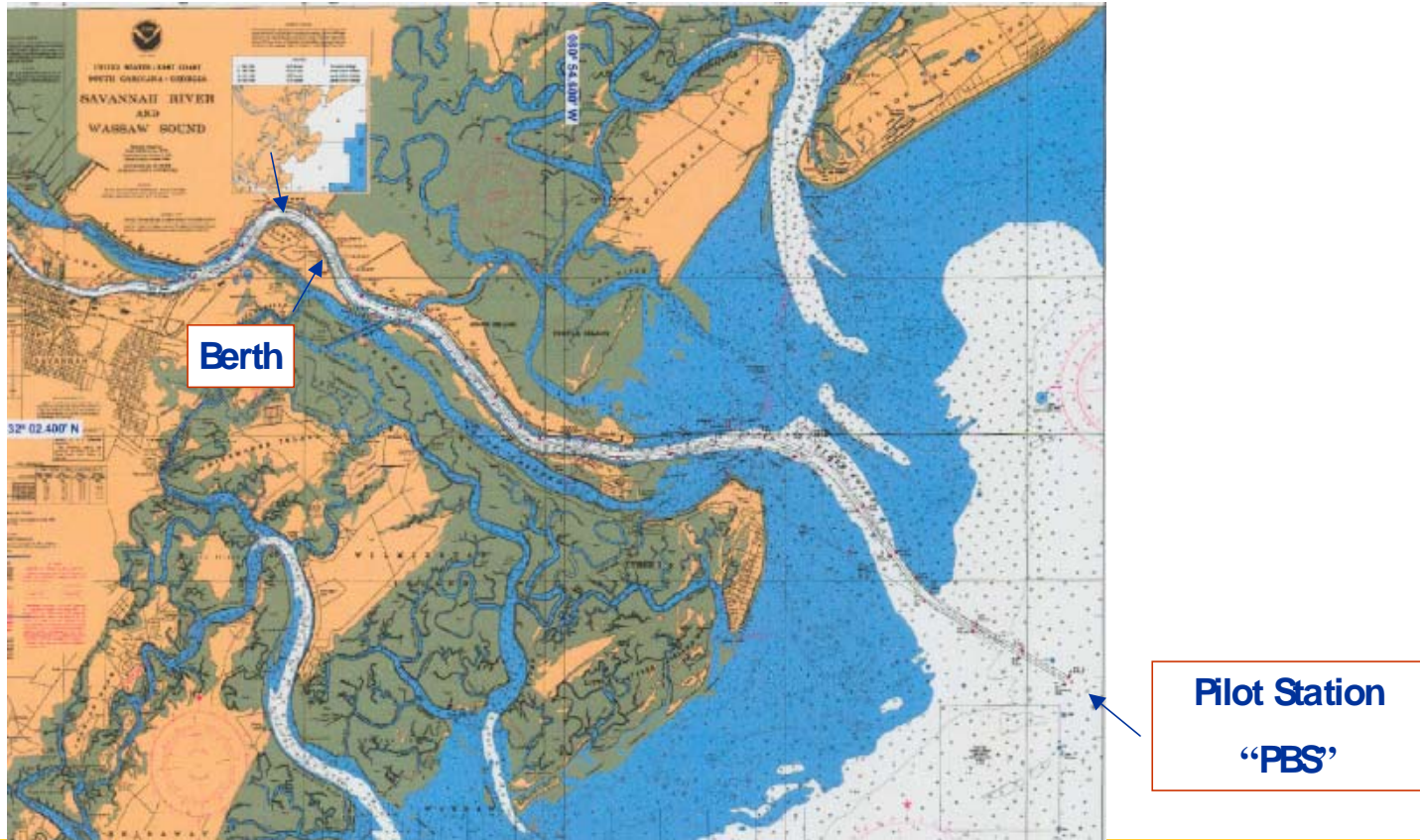
1. Delays, within the boundary of the US Economic Zone, impacting the arrival of an LNG vessel at the Pilot Boarding Station (PBS), eg adverse weather such as a hurricane, vessel malfunction etc.
2. Delays, after arrival at the PBS, impacting the arrival of an LNG vessel to the unloading berth at the regasification terminal, eg adverse weather (fog), obstructions in the shipping channel, vessel malfunction etc.
3. Interruptions to the regasification terminal services, eg limitations of LNG storage, natural gas vaporization and send out etc.

Operating Regas Terminals



Elba Island - Marine facilities/ operations

Berth is situated 17 miles from Pilot Station.



Elba Island – Regas and Berth

