

Proposed NAESB WEQ and WGQ Standard: S7X - Analysis

Proposed NAESB WEQ and WGQ Standard:

S7X Subject to NAESB WEQ Standard No. [S1B] and NAESB WGQ Standard No. [S1B], when engaging in communications described in NAESB WEQ Standard Nos. [S2X and S3X] and NAESB WGQ Standard Nos. [S2X and S3X]:

1. The Power Plant Operator (PPO) should communicate with the Transportation Service Provider (TSP) that is directly connected to the PPO's Facility(ies) (Directly Connected TSP). If the Directly Connected TSP determines that requested flow rates are not operationally feasible unless (1) the upstream delivery entity(ies) makes changes to support the requested flow rates and (2) the upstream delivery entity(ies) supports such a process, then, the following communication procedures should be used, if the PPO wishes to pursue the request:
 - (a) the PPO should communicate its requested flow rates to the appropriate contractual party(ies) on the affected delivery entity(ies) upstream of the PPO's Facility(ies),
 - (b) as appropriate, the Directly Connected TSP should contact the interconnected upstream delivery entity(ies) regarding the potential flow change; and,
 - (c) the appropriate contractual party(ies), the upstream delivery entity(ies), and the PPO should work together with the Directly Connected TSP to determine if the PPO's requested flow rates can be accommodated based upon the appropriate application of the tariff requirements, business practices, contract provisions, or other similar provisions of the affected parties.
2. Conditioned upon the tariff requirements, business practices, contract provisions, or other similar provisions of the affected TSP(s) and/or the ability of such TSP(s) to allow the requested flow rates based on conditions at the time of the request, as well as the ability of the supplier(s) to effect changes in the flow rate, the TSP(s) should accept or deny the PPO's specific request without adversely impacting other scheduled services, anticipated flows, no-notice services, firm contract requirements, and/or general system operations.
3. If the affected TSP(s) affirms a PPO's specific requested flow rate, the PPO and the TSP(s) should work together to resolve the PPO's request based on the appropriate application of the tariff requirements, business practices, contract provisions, or other similar provisions of the TSP(s). If required, the PPO should ensure that nominations are placed on all affected TSPs.

These procedures will govern such communications unless the applicable parties mutually agree to create alternative communication procedures that are more appropriate.

Analysis:

Who: PPOs, TSPs and appropriate contractual parties.

What:

- 1) The Power Plant Operator (PPO) should communicate with the Transportation Service Provider (TSP) that is directly connected to the PPO's Facility(ies) (Directly Connected TSP).
- 2) The TSP directly connected to the PPO's Facilities, upon receipt of a request for a flow rate change, determines whether it can make the necessary changes to flow rates on its own or whether it needs addition supplies/flow rate changes from upstream connected entities.
- 3) The PPO should communicate its requested flow rates to the appropriate contractual party(ies) on the affected delivery entity(ies) upstream of the PPO's Facility(ies),
- 4) The appropriate contractual party(ies), the upstream delivery entity(ies), and the PPO should work together with the Directly Connected TSP to determine if the PPO's requested flow rates can be accommodated based upon the appropriate application of the tariff requirements, business practices, contract provisions, or other similar provisions of the affected parties.

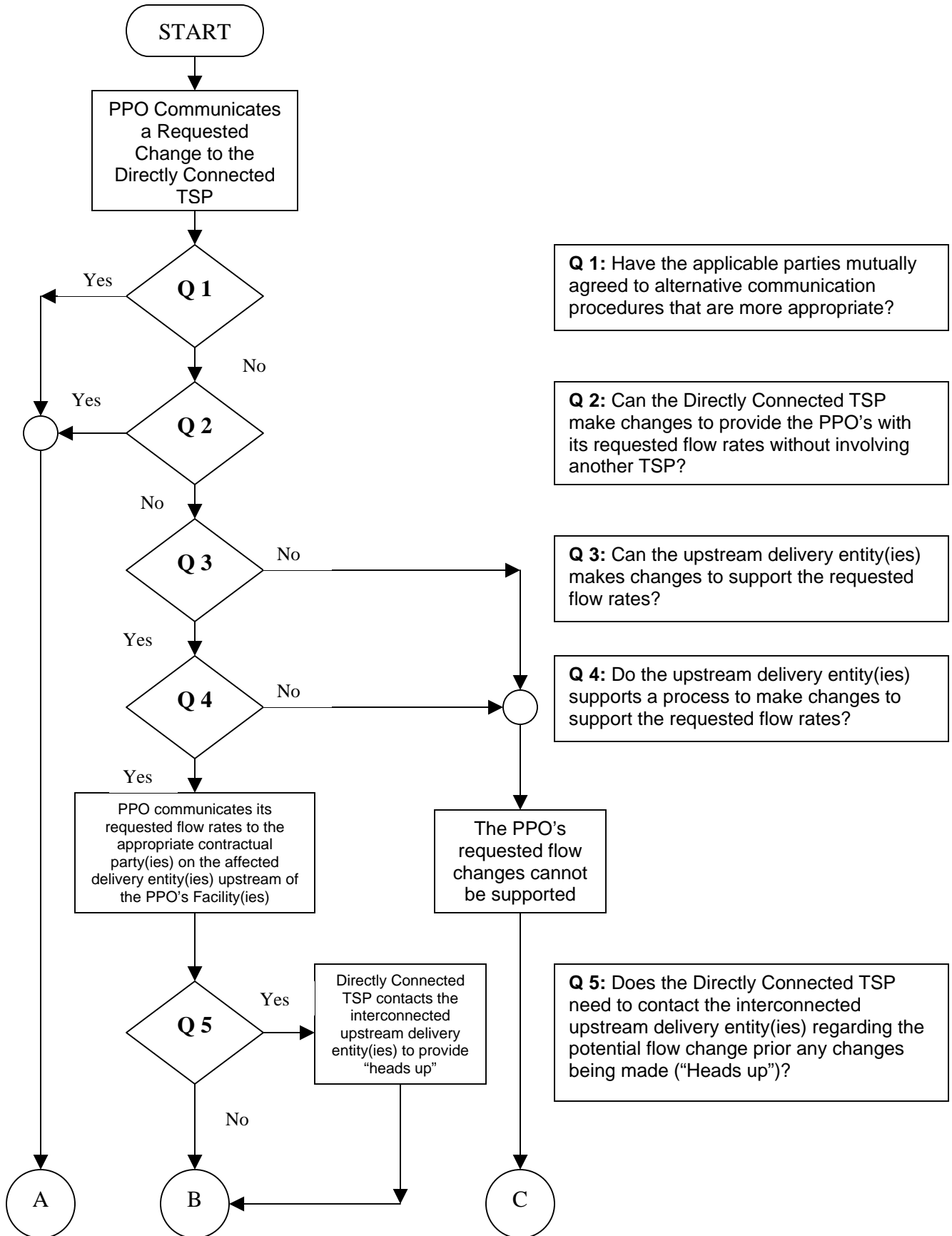
Proposed NAESB WEQ and WGQ Standard: S7X - Analysis

5) If required, the PPO should ensure that nominations are placed on all affected TSPs.

Key Points: 1) The TSP should accept or deny the PPO's specific request conditioned upon the tariff requirements, business practices, contract provisions, or other similar provisions of the affected TSP(s) and/or the ability of such TSP(s) to allow the requested flow rates based on conditions at the time of the request, as well as the ability of the supplier(s) to effect changes in the flow rate.
2) The resolution should not adversely impact other scheduled services, anticipated flows, no-notice services, firm contract requirements, and/or general system operations.

Exception: These procedures will govern such communications unless the applicable parties mutually agree to create alternative communication procedures that are more appropriate.

Proposed NAESB WEQ and WGQ Standard: S7X - Analysis



Proposed NAESB WEQ and WGQ Standard: S7X - Analysis

