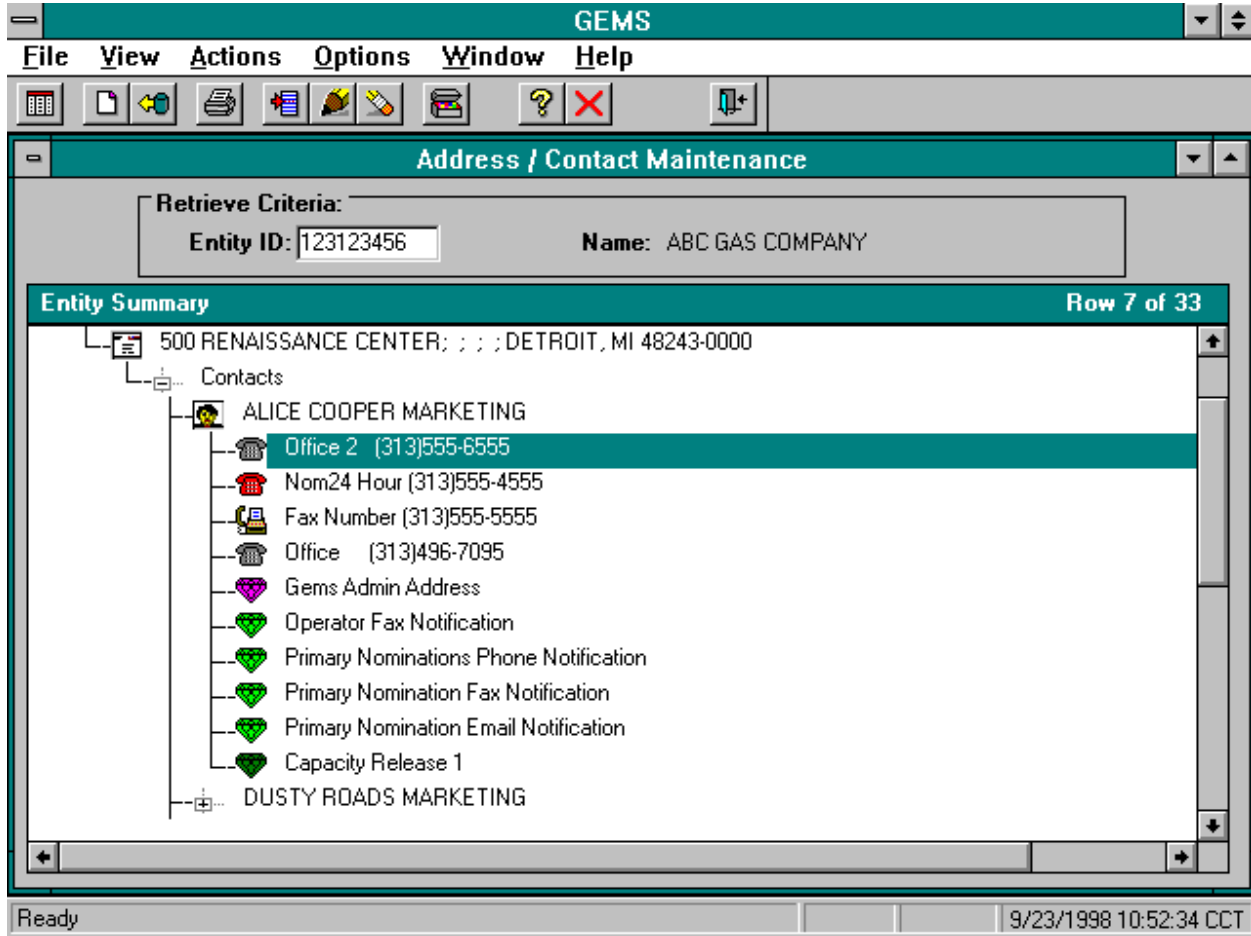


ANR Pipeline Company
September 25, 1998
GEMS Entity Address and Contact Maintenance Window



This window is used by customers to add, change and delete various Entity information including addresses, contacts, phone numbers and business uses. A **business use** will indicate to GEMS where system generated notifications should be sent. Specific business uses are used to identify the type of notification desired by the customer.