

TECHNICAL IMPLEMENTATION - EBB/EDM

Introduction

Industry Goal/Purpose

1) The goal of EBB/EDM can be found in NAESB WGQ Standard 4.3.38.

Formatted: Bullets and Numbering

Deleted: 6, which reads:
Transportation Service Providers should establish a HTML page(s) accessible via the Internet. The following information should be posted:
<#>Notices (critical notices, operation notices, system wide notices, etc.)
<#>FERC Order No 566 affiliated marketer information. (affiliate allocation log, 24 hr. discount posting, etc.)
<#>Operationally available and unsubscribed capacity
<#>Index of customers
Transportation Service Provider's tariff (Terms, conditions and rates), or general terms and conditions.

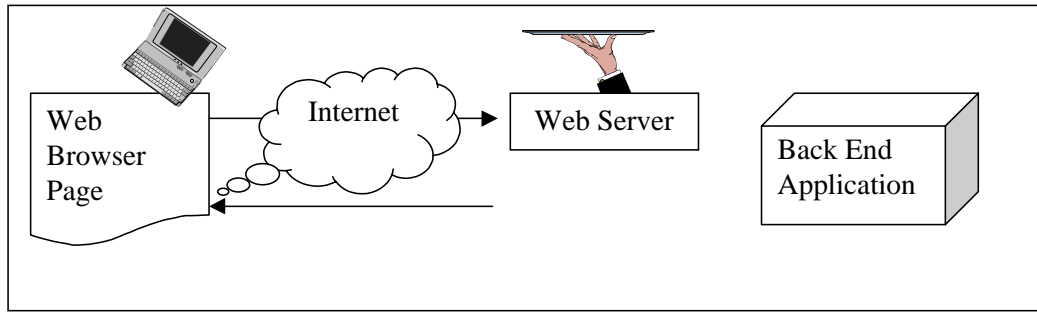
What is Covered in NAESB WGQ Standards?

- Common terminology
- Order of data elements
- Placement of navigation and processing functions
- User workstation technical characteristics
- Form and Matrix Areas

What is NOT Covered in NAESB WGQ Standards?

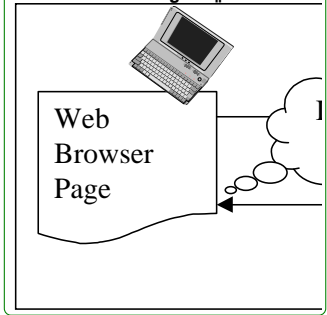
- The exact format of the screens
- The level of interactivity
- The technology of back office systems

Flow Diagram



Deleted: Related Standards

Deleted: Flow Diagram



Specification

Navigation

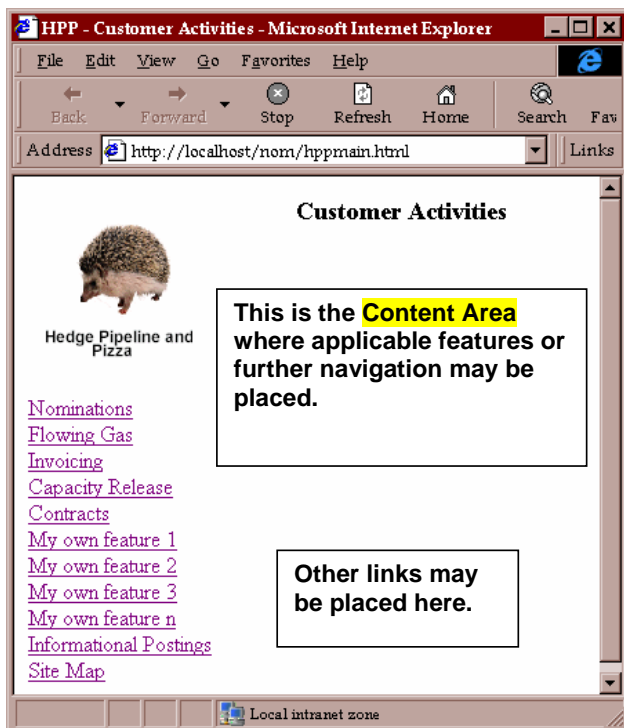
The pages of the Customer Activities site are divided into the same basic areas as the Informational Postings site. These are the Navigational Area and the Content Area. The top level navigation menu should include the following categories and labels, as applicable:

- Nominations
- Flowing Gas
- Invoicing
- Capacity Release
- Contracts
- Informational Postings
- Site Map

Formatted: Bullets and Numbering

Each of these may provide a link to another set of links detailing the associated area. When additional features are placed within this menu, place those features before the Informational Postings label/link. These links as well as the general layout of the [top-level](#) page may be seen in the example below. When a category does not have a subcategory the link should directly navigate to the area described. This does not preclude a further breakdown within each subcategory from being listed in the Navigational Area.

Deleted: top level





Hedge Pipeline and
Pizza

- [Nominations](#)
- [Nomination](#)
- [Confirmation](#)
- [Scheduled Quantity](#)
- [Flowing Gas](#)
- [Invoicing](#)
- [Capacity Release](#)

Nominations Sub-categories

The adjacent figure shows the Nomination category expanded to show each of its sub-categories.



Hedge Pipeline and
Pizza

- [Nominations](#)
- [Flowing Gas](#)
- [PDA](#)
- [Allocation](#)
- [Imbalance](#)
- [Measurement](#)
- [Invoicing](#)
- [Capacity Release](#)
- [Contracts](#)

Flowing Gas Sub-categories

The adjacent figure shows the Flowing Gas category expanded to show each of its sub-categories.

Hedge Pipeline and
Pizza

- [Nominations](#)
- [Flowing Gas](#)
- [Invoicing](#)
- [Capacity Release](#)
- [Offers](#)
- [Bids](#)
- [Awards](#)
- [Contracts](#)
- [My own feature 1](#)

Capacity Release Sub-categories

The adjacent figure shows the Capacity Release category expanded to show each of its sub-categories.



- [Nominations](#)
- [Flowing Gas](#)
- [Invoicing](#)
- [Invoice](#)
- [Payment Remittance](#)
- [Statement of Account](#)
- [Capacity Release](#)

Hedge Pipeline and
Pizza

Invoicing Sub-categories

The adjacent figure shows the Invoicing category expanded to show each of its sub-categories.

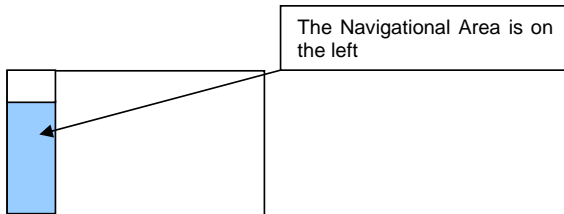
The Parts of the Page

Navigational Area

The Customer Activities web site carries many of the cosmetic features found in the Informational Postings site. The left hand menu is used for navigation to the actual transactional pages. Implementation of this menu should include the categories and sub-categories shown in the Navigation section of this document, as applicable.

Deleted: Among these, and most notably is that

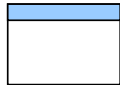
Deleted: t



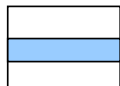
Layout on Transactional Pages of the Customer Activities Web sites:

The layout of transactional pages is divided into the following sections/areas:

The Header – The area at the top of the Content Area where search criteria, navigation and processing functions may be contained.



The Form – This is the area directly below the Header. It is used to display/edit a single item from the Matrix. Alternatively, this area may be an entire new page linked to the Matrix. This means that selecting from the Matrix may bring up an entirely new window for the Form display.



The Matrix – This area should be below the Form, when the Form is on the same page as the Matrix. It is used to display a list of items for the page. This area may be used for update/edit as well. Alternatively, this area may be an entire new page linked to the Form.



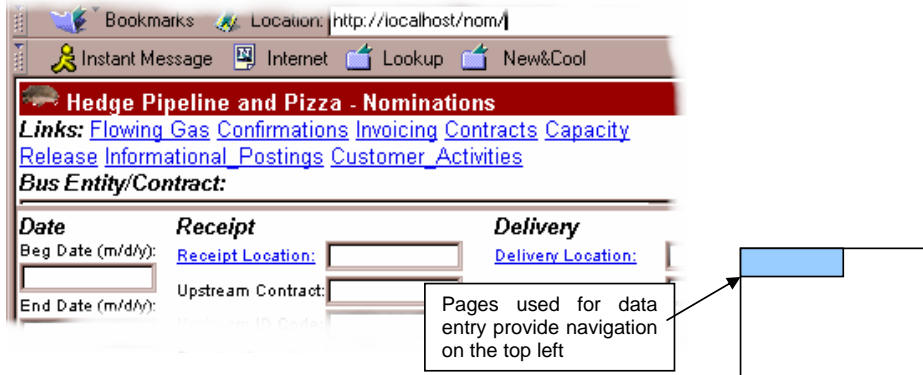
On the nominations screen, the Form and the Matrix may be combined into one, if no left and right scrolling is required to enter a nomination.

Navigation on Customer Activities Web Sites Pages

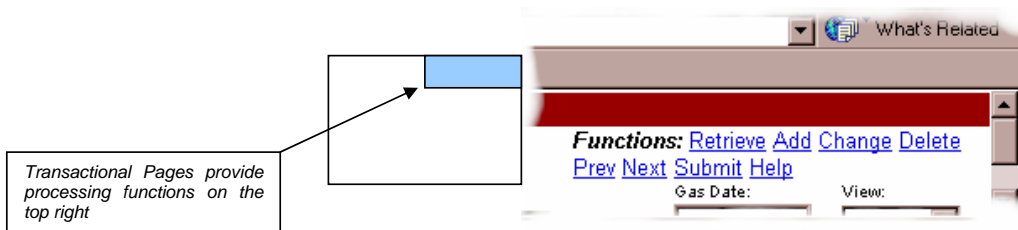
Although the Navigational Area is provided on the left, many of the data entry pages do not lend themselves to a significant percentage of the space being used by such a menu. Thus, on these data entry pages, the navigation links may be placed on the upper left portion of the page. The exact links provided are not standardized.

Deleted: it is recognized that

Example:



Processing Functions



Processing Functions vary between implementations of the transactional windows on the Customer Activities web sites. A given function may or may not be used on any given site. However when present these functions should appear in the top right area of the page.

Deleted: Related Standards

The Form

The Form area of a data entry page is the portion that holds a display, and sometimes entry/edit fields for a single selected row of data. The Form is intended as an area that displays the record without needing to scroll the window from right to left. The data in this area can be populated when a record is selected from the Matrix. There are several technical implementations of this area, including:

- Separate the Form and Matrix in separate frames to allow each to be painted separately on the same page.
- Separate the Form and Matrix in separate linked pages to allow each to be painted separately.
- Build these as integrated [objects](#) to allow communication between the displays. This may be implemented on either one or multiple pages.
- Use [a script](#) to populate input fields based on selections and the corresponding events. This may be implemented on either one or multiple pages.

Deleted: JAVA® O

Deleted: JavaScript

Deleted:

The Matrix

The Matrix is a list of items for [a particular page](#). [For example, on a Nominations entry page](#), the Matrix would contain a list of nominations. This list [provides a mechanism that allows a user to select a given row/record](#). [This can be accomplished by the use of a simple link, a button, JAVA® control, etc.](#) The order of the columns in this list is not standardized if a Form is provided. The EBB/EDM standards (specifically NAESB WGQ Standard 1.3.48) provide the option for the Transportation Service Provider to also provide for nomination data entry on the matrix, in addition to data entry on the form.

Deleted: that

Deleted: So, for

Deleted:

Deleted: needs to

Deleted: some

Deleted: o

Deleted:

Deleted: Some of the ways that this

Deleted: include

Deleted: or

| Paths Contract:22379 Gas Date: 1/1/2001 | | | | | | | | | | | |
|-----------------------------------------|----------|----------|--------------|------------------------|----------|----------|---------------|--------------------------------|----------|----------|--------|
| ** | Start | End | Receipt Loc. | Name | Contract | Quantity | Delivery Loc. | Name | Contract | Quantity | Status |
| | 1/1/2001 | 1/2/2001 | 34243 | DOM PICKENS EFFIE M | 223311 | 120 | 162749 | RED BLUFF MASTER METER | 48792 | 130 | |
| | 1/1/2001 | 1/2/2001 | 34259 | F. M. CARTER | 223311 | 26 | 185063 | BRILLHART FARM TAP DELIVERY | 48792 | 13 | |

Receipts:146 / Deliveries:143

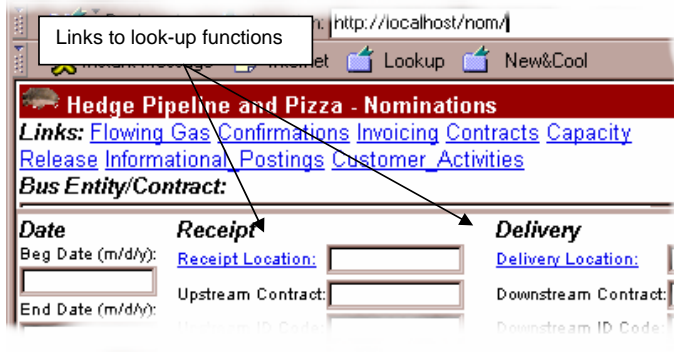
Deleted: Related Standards

Look-ups

Look-ups are links associated with a function to that given value. For example, the Nominations page requires look-ups for the receipt and delivery location values. A selector should be provided which will 'pop-up' a device to search for a location value when the mouse pointer is near that value. There are many implementations of this feature including, but not limited to, providing a link that would open another window with a structured search function.

Deleted: that there be

Deleted: This means that, near that value, a



Security

Firewalls:

A firewall is one or more computers running special software designed to provide control of communications between two networks and prevent the availability of services and confidential internal data to unwelcome intruders from the Internet. Its purpose is to limit the types of services between these two networks. Often, a company's connection to the Internet is intended to provide several other services to its employees who are connected by an internal network such as a Local Area Network or Wide Area Network (LAN or WAN). Examples of these services include access to the World Wide Web, use of e-mail, use of file transfer capabilities and publishing content intended for viewing by the external world on a Web server. In addition, the internal network will likely have connections to host computers which provide internal services such as file and print sharing, fax and database capabilities. There are two general mechanisms employed by firewalls to provide this control: packet filtering and proxy services. Packet filtering examines important components of the messages such as the address of the sending and target computers and the designator (port number) for a specific application running on the target computer. Packet filtering can prevent access to specific computers or programs on those computers as well as reject messages from certain computers. Among other features, proxy servers act as relay agents that examine attempted use of certain features within an application thus limiting access to these features. Proxy servers also hide (by substituting its own address) the internal addresses of clients communicating with external hosts. By hiding the client's internal address, it is difficult for potential attackers to focus on specific internal hosts.

Deleted: which is

Deleted: So that availability of these services and confidential internal data are not compromised by unwelcome intruders from the Internet, there should exist a protective mechanism between the internal network and the public Internet, the firewall. ¶

Deleted: By doing this, it

Deleted: . It can also

Deleted: P

Deleted: have various capabilities. They can

Deleted: can

Deleted: They can

Deleted: This

Deleted: makes

Because firewalls are designed to deal with a broad set of security issues, which may vary at each organization, and are not specific to the use of HTTP, this guide does not attempt to provide specific implementation information. Deciding on a specific firewall architecture, organizational security policies, and choosing between numerous products may require outside resources to address these issues.

Login:

Access to the 'Customer Activities' site should be protected by HTTP Basic Authentication or similar logon/password mechanism(s) using 40-bit encryption. A 'Customer Activities' site should require a single logon/password pair for each user session.

Encryption:

At a minimum, data communications for a 'Customer Activities' site should utilize 40-Bit encryption. Where possible, 128-Bit encryption is strongly recommended. This may be implemented through any of the following techniques:

- 40-bit SSL
- 40-bit RSA JAVA[®] communications
- 40-bit Secure ICA[®]

Deleted: Specific products should be reviewed prior to implementation for Year 2000 compliance.

Server Specifications – Ports *

Servers should be configured to use one of the allowable TCP ports listed in Appendix E.

Transportation Service Provider EDM implementations should minimize the number of outbound ports required to be opened on the client side firewall. Each time a server application requires an additional open port, it is potentially necessary for the users of that site to open another outbound port. An effort has been made to provide a limited number of these ports, and a user should be able to use any EDM site if all of these outbound ports have been provided.

Deleted: other

Deleted: yet

Client Specifications *

General:

A workstation configured in accordance with the hardware and software recommendations provided should be able to run any compliant application. Developers of web site applications must test using each of the browsers with only the standard features available. See Appendix C for Minimal and Suggested Technical Characteristics.

Deleted: This means that developers

Browser Characteristics:

* Technical implementations above represent a non-comprehensive set of choices which an implementer may use. This list in no way should be construed as an endorsement by NAESB WGQ of any specific products. Other products supporting the technical implementation may be used.

* Technical implementations above represent a non-comprehensive set of choices which an implementer may use. This list in no way should be construed as an endorsement by NAESB WGQ of any specific products. Other products supporting the technical implementation may be used.

Deleted: Related Standards

HTML Use

Features of HTML including Frames, Tables, Style Sheets, DHTML, JavaScript, etc. [and](#) should be tested under any allowed browser. [Features should not be provided that are only supported by a single browser.](#) For example if a given DHTML tag is not available in all supported platforms it cannot be used, or the application must detect the variation in browser and accommodate [the](#) difference. [The key to successful implementation under the standards is to test every function under all standard platforms using all standard browsers.](#)

Deleted: This means that

Deleted: f

Deleted: is

JAVA[®]

The standards allow for the use of a particular JAVA[®] version. This version is not normally provided with the common browsers, and compatibility may require the use of a JAVA[®] plug-in.

ICA[®]

In order to facilitate transition of client server applications ICA[®] plug-in is allowed in the standard. This plug-in provides a remote image from the server. Since ICA[®] is not necessarily a Browser object linking and menus may behave differently.