



Gas Industry Standards Board

1100 Louisiana, Suite 4925, Houston, Texas 77002

Phone: (713) 356-0060, Fax: (713) 356-0067, E-mail: gisb@aol.com

Home Page: www.gisb.org

TO: **Board of Directors:** Stan Horton, Ron Mucci, John Somerhalder, Terry McGill, Bob Reid, Hugh Roberts, Allan Knopp, Bill Benham, Pete Dixon, Abigail Bailey, Jim Templeton, Vicky Bailey, Janie Mitcham, Lee Smith, Paul Karns, Greg Lander, Steve Bergstrom, Julie Gomez, Lyn Maddox, Marty Patterson, Reed Horting, Lee Stewart, Bill Boswell, Adrian Chapman, Walt DeForest

FROM: **Board Task Force and Contributors:** Stan Horton, Ron Mucci, Hugh Roberts, Allan Knopp, Jim Templeton, Vicky Bailey, Janie Mitcham, Greg Lander, Steve Bergstrom, Reed Horting, Lee Stewart, Bill Boswell, Jim Buccigross, Mike Novak, Shelley Corman, Bill Oppenheim, Mark Scheel and Keith Sappenfield

RE: **Possible Structure for the New Standards Organization**

DATE: September 21, 2000

Dear Board Members,

Attached please find the Strawman report from the Board task force regarding the creation of a energy standards board and a possible governance structure. Charts accompany the report for presentation purposes. The board task force is recommending that the Board discuss this Strawman at the September Board meeting, and approve the Strawman report for the purposes of discussion with interested parties. The discussion would address the possibility of either GISB expanding its scope to address standards for the electric industry or the establishment of a new organization along the lines of the strawman into which current GISB resources, work efforts and existing standards would be transferred. Among the interested parties would be those identified in the Strawman and include electricity generators, electricity transmission companies, electricity distribution companies, electricity end users, electricity marketers and other electricity service providers, existing GISB members and representatives from government agencies.

Best Regards,

Rae



Draft Strawman for an Energy Industry Standards Organization

In several meetings, it was discussed that the purpose of this new organization would be to propose and adopt voluntary standards designed to promote more competitive, efficient and reliable energy service. Such standards would apply to electronic exchange of information, record and data formats, communications protocols and related business practices that streamline the transactional and coordination processes of the electricity and natural gas marketplace. It is intended that this new organization would be a successor to the existing organization, GISB.

This document provides a possible structure and principles for organizing such a structure. The principles are based on commonly accepted precepts of a standards organization to work for both the Electric and Gas Industries. The document outline of the structure should not be misconstrued as the only way to organize a new standards organization to support development of standards for both electricity and natural gas markets.

Principles

Independence – The standards organization should be an independent body. While it may have informal liaisons to trade associations, other standards organizations and government agencies, it should be a separately incorporated fully independent organization.

Openness -- The standards organization should conduct its activities in the open. Openness should apply to all aspects of its organizational governance, elections and standards development processes, including work products and related meetings. The meetings, agendas and items set for discussion and/or possible vote should be publicly noticed, and interested parties, regardless of membership should be invited to participate.

Voluntary -- Participation in the standards organization should be voluntary and adherence to its standards should, from the standards organization's perspective, also be voluntary. Membership should not be dependent upon whether the company seeking membership implements the standards. The organization will not maintain any type of standards enforcement activity.

Balance of Interests – The voting with respect to governance and standards development procedures should provide for balance between industry segments participating in the standards organization so as to avoid any one interest group or group of interests having the ability to exert undue influence over any decision.

Inclusivity – All industry stakeholders should be identified and associated with a segment and section. All interested parties are invited to participate in the activities of the standards organization and to join the organization.

Consensus Based Decisions -- The voting rules should be constructed so that decisions based upon consensus are encouraged. In addition, with respect to voting upon the business standards issued or to be issued by the organization, individual energy sections and their segments should be assured that each energy section and segment can protect its interests by requiring both super-majorities and a minimum per segment and energy section threshold be achieved for passage of such standards by the organization.

No Advocacy – The standards organization should be prohibited from taking advocacy positions on its standards as a party to any proceeding before a governmental agency. This is not intended to preclude the organization's duly authorized representatives from educating or communicating with any group as to the organization's procedures and/or work product(s).



Gas Industry Standards Board

1100 Louisiana, Suite 4925, Houston, Texas 77002

Phone: (713) 356-0060, Fax: (713) 356-0067, E-mail: gisb@aol.com

Home Page: www.gisb.org

Membership Driven - The standards organization should be membership driven. The paid staff should perform administrative functions to support the organization's activities. Requests for standard(s) should be proposed by identified persons and not by the organization or its committees and subcommittees. The organization's staff should neither have a vote nor a role with respect to conducting the affairs of the organization other than to provide ministerial functions.

Implement and Streamline Existing Policy, Do Not Create Policy - The Committees and Subcommittees of the standards organization should endeavor to not create policy in their standards development activities absent being requested to do so by the applicable body (Executive Committee or Board of Directors). To the extent reasonable, the standards to be established should reflect standardization and streamlining of activities chosen from among existing policies and practices.

Possible Organizational Structure

Energy Sections - Defined as Electric or Gas.

Industry Segments - The industry segments should be defined as follows:

Energy Industry Segments	Description
Energy Producers	Natural Gas and Electricity Producers - Those companies primarily engaged in the production of natural gas for sale to others representing the Gas Energy Section and those companies primarily engaged in the generation of electricity for sale to others representing the Electric Energy Section.
Energy Transmission Providers	Natural Gas Pipelines and ISO/RTO/Transco Electricity Transmission Providers - Those companies primarily engaged in the transmission of natural gas through pipelines representing the Gas Energy Section and those companies primarily engaged in the transmission of electricity representing the Electric Energy Segment.
Energy Distributors	Natural Gas and Electricity Distributors - Those companies primarily engaged in the local distribution of natural gas representing the Gas Energy Section and those companies primarily engaged in the local distribution of electricity representing the Electric Energy Section.
Energy End-users	Natural Gas and Electricity consumers - Those companies which consume natural gas representing the Gas Energy Section and those companies which consume electricity representing the Electric Energy Section.
Services	Providers of services to participants in the Natural Gas and/or Electricity industries. This segment includes marketers, software providers, consultants and other companies not otherwise considered to be an Energy Producer, Energy Transmission Provider, Energy Distributor, or Energy End-User. There would be a Gas Energy Section and an Electric Energy Section.

Membership -- Members are companies participating in the natural gas and/or electricity markets. Trade associations, advocacy groups and special interest groups are not considered members but are encouraged to participate in the organization. When joining, each member declares the Energy Section and Segment with which they are to be identified. Corporate organizations which have multiple companies, under common control, which desire to become



Gas Industry Standards Board

1100 Louisiana, Suite 4925, Houston, Texas 77002

Phone: (713) 356-0060, Fax: (713) 356-0067, E-mail: gisb@aol.com

Home Page: www.gisb.org

members, must join individually. While a corporate organization can have memberships in multiple Energy Sections or Segments, one member cannot join multiple Energy Sections or Segments. Members do not extend their membership to affiliates or subsidiaries; the affiliates and subsidiaries join separately. Members vote to ratify governance changes approved by the Board of Directors and proposed standards approved by the Executive Committee without regard to their Energy Section or Segment identification. For a jointly owned company, its corporate organization is determined by the majority ownership.

Board of Directors - The Board of Directors should be responsible for funding, annual plan definition and approval, changes to the governance document and structure, and overall direction of the organization. The Board would be comprised of 40 Board members, no more than one from each distinct corporate organization. It should be composed of eight (8) members from each of the five Segments, including four (4) from each Energy Section. Not more than one board seat may be held by persons from the same corporate family. Agents for member companies are not permitted to be Board members. Board members are individuals who are elected to the Board from among the membership of each Energy Section in each Segment according to Board approved Procedures. A member is not permitted to substitute other individuals for the elected, named, member of the Board. A Board Member is permitted to continue to serve as a Board Member for their full term provided such individual continues to be affiliated with a member in good standing which meets the applicable requirements for that Energy Section and Segment, and further provided the applicable Energy Section representation and apportionment provisions are met. Board member terms are two years in duration. Board membership is initially staggered to provide for continuity on the Board. The Board is the determining body for scope and other governance issues. A super-majority vote of the Board is required to adopt governance changes. The Board may create committees as needed to carry out its directives. Members of each individual Energy Section in each Segment would, through a vote of its members, determine procedures for selecting Board members. Segment procedures shall be submitted to the Board for ratification. The Board shall ratify any segment procedures, which are not inconsistent with the articles of incorporation or bylaws. The Board shall act by simple majority vote.

Board Meetings: Board Meetings shall be in person at locations determined by the Board Officers. In addition, Board Members may participate and vote by means of tele-conference or other electronic means. Eligibility to continue serving as a Board member is dependent upon in-person attendance at no less than 50% of scheduled Board Meetings. Such attendance threshold shall be reviewed at March 31 and September 30 of each year for the preceding twelve months. Failure to meet the 50% threshold for reasons other than hospitalization or disability will result in forfeiture of the Board seat and an election to fill the seat by the next Board Meeting.

Executive Committee - The Executive Committee is responsible for carrying out the Annual Plan. The Annual Plan approved by the Board describes the areas and general priorities for standards development. The Executive Committee would be comprised of 40 members, each from a distinct member company. The Executive Committee is composed of five Segments each with eight (8) members, including four (4) from each Energy Section. The Executive Committee votes on the recommended standards, which result from duly constituted Subcommittee and Task Force efforts. Executive Committee members are individuals who are elected to the Executive Committee from among the membership of the Energy Section of each Segment according to procedures developed by the Energy Section in each Segment and approved by the Board. A member is not permitted to substitute other individuals for the elected, named, member of the Executive Committee. Terms are three years, and are initially staggered within Segment and Energy Section, similar to Board procedures.



Gas Industry Standards Board

1100 Louisiana, Suite 4925, Houston, Texas 77002

Phone: (713) 356-0060, Fax: (713) 356-0067, E-mail: gisb@aol.com

Home Page: www.gisb.org

An Energy Section of a Segment may have Procedures, which permit the election of Alternates. Where an Energy Section of a Segment has Procedures providing for the election and seating of Alternates, Alternates may be recognized as attending an Executive Committee and voting upon matters duly scheduled for the meeting. An Executive Committee Member is permitted to continue to serve as an Executive Committee Member for their full term; provided, such individual continues to be affiliated with a member in good standing which member meets the applicable requirements for that Energy Section of that Segment. The Executive Committee is the determining body for standards issues. The Executive Committee procedures require all of super-majority, minimum Segment, and minimum Energy Section thresholds to be achieved for there to be passage of proposed standards. The Executive Committee will create subcommittees as needed to carry out its directives.

Executive Committee Meetings: Executive Committee Meetings shall be in person at time and location determined by the Chair and Vice-Chair of the Executive Committee. In addition, Executive Committee Members may participate and vote by means of tele-conference or other electronic means. Eligibility to continue serving as an Executive Committee Member is dependent upon in-person attendance at no less than 50% of scheduled Executive Committee Meetings. Such attendance threshold shall be reviewed at March 31 and September 30 of each year for the preceding twelve months. Failure to meet the 50% threshold for reasons other than hospitalization or disability will result in forfeiture of the Executive Committee seat and an election to fill the seat by the next Executive Committee Meeting.

Energy Section and Segment Declaration: A company, which joins the standards organization as a member, should declare its Energy Section and Segment participation upon joining. Such declaration shall remain in place at least until the company's next annual membership renewal at which time the member may re-designate their Energy Section and Segment as appropriate. No individual member company may designate themselves as a member of more than one Energy Section or Segment. The intent is that a member should have a significant business interest in the Energy Section and Segment that is declared above and that people who represent the member in the activities of this organization should have corporate responsibility for that business interest. While no individual member company may designate themselves as a member of more than one Energy Section or Segment, this restriction does not prevent that individual member company from participating in any of the efforts of the committees or subcommittees, providing input and perspectives.

Segment and Section Procedures: There shall be for each Energy Section in each Segment nomination procedures governing the nomination process for elections to fill seats on the Board and Executive Committee. Such procedures should set forth the nomination and election procedures to be administered by the standards organization's administrative office. Such procedures are also to be reviewed and approved or rejected by a majority vote of the Board of Directors.

Governance Change Passage: The threshold for the Board to pass a governance change (amendment to the charter or bylaws) is at least 30 affirmative votes of a possible 40, with at least 4 affirmative votes from each Segment and at least 2 affirmative votes from each Energy Section in each Segment. The governance change would then require ratification by 90% of the membership, with members who do not vote counted as affirmative votes.

Standards Passage: The threshold for the Executive Committee to pass a Standard is at least 27 affirmative votes out of 40, with at least 4 affirmative votes from each Segment and at least 2 affirmative votes from each Energy Section in each Segment, unless the standard is determined to apply to only one Energy Section, as provided below. In either case, the standards would then require ratification by 67% of the members who vote.



Gas Industry Standards Board

1100 Louisiana, Suite 4925, Houston, Texas 77002

Phone: (713) 356-0060, Fax: (713) 356-0067, E-mail: gisb@aol.com

Home Page: www.gisb.org

Procedures for Voting on Gas or Electric Only Standards: There may be occasions where standards are proposed to the Executive Committee by the working level subcommittees (following Triage and other normal processes) which members of the Executive Committee consider to be applicable to only the natural gas or electric Energy Sections. In these instances, upon a vote of the Executive Committee (27, 4 & 2) vote, in the affirmative, a standard would be a) determined to be only germane to one or the other Energy Section, b) would be referred to that Energy Section of the Executive Committee, and c) would only be voted upon by the Energy Section involved. Approval of the proposed standard would take fourteen (14) affirmative votes of the Energy Section involved plus at least two (2) affirmative votes from each of Energy Section's Segments.

Reconsideration of Standards Passed with a 14 and 2 Vote in an Energy Section: Where the language of a standard which was passed as a 14 and 2 standard, has materially varied from the language of that standard as presented to the Executive Committee in the recommendation (and determined by the 27, 4, and 2 vote to be eligible for consideration as a 14 and 2 vote) such that the standard could impact both energy sections, a motion may be made for reconsideration of the Energy Section assignment. Such motion should be made prior to adjournment of the meeting at which the standard was passed by the "14 and 2". Following discussion, a motion for reconsideration of the section assignment must achieve a 67% majority affirmative tally from the Executive Committee members present and voting for the motion to carry. Abstentions are not counted in the calculation.

Upon failure of a reconsideration motion, the approved standard goes to the membership for ratification. Upon passage of the reconsideration of section assignment motion by a two thirds affirmative vote from Executive Committee members present and voting, the standard would be immediately forwarded for industry comment, and reconsidered by the entire Executive Committee at its next meeting. In the next meeting, the entire Executive Committee would approve the standard on a 27, 4, 2, vote or return it to a subcommittee for further consideration. In the absence of either event, the standard fails.

Advisory Committee - The Advisory Committee is composed of interested regulators, other governmental officials, and representatives of consumer advocacy organizations. It advises with respect to, and may propose that the Board consider, items for the annual plan and direction of the organization.

Interested Public - Nonmembers can participate in any subcommittee or task force (except for committees or subcommittees with named members) and attend all meetings, including the Board and Executive Committee meetings. They are asked to comment on all proposed standards prior to consideration by the Executive Committee.

Standing Business Practices Subcommittees: The Executive Committee should establish three Business Practice Subcommittees. One should be an electric Business Practices Subcommittee, another should be a natural gas Business Practices Subcommittee, and the third should be a combined Energy Section Business Practices Subcommittee. The intent of having a combined energy Business Practices Subcommittee would be that it is the body that would be designated to handle items that are not solely germane to either natural gas or electric practices, respectively. These gas and electric subcommittees would have Co-Chairs from their respective Segments (5 each) and the combined subcommittee would have Co-Chairs one from each Segment and Energy Section (10 total).

Other Operating Practices and Procedural Matters: There should be one Triage Subcommittee with 10 members, with one member from each Energy Section of each Segment. The Triage Subcommittee's mission would be to review and recommend to the Executive Committee how and to which subcommittees requests should be directed for processing, including scope and priority recommendations.



Gas Industry Standards Board

1100 Louisiana, Suite 4925, Houston, Texas 77002

Phone: (713) 356-0060, Fax: (713) 356-0067, E-mail: gisb@aol.com

Home Page: www.gisb.org

There shall be an Interpretations Subcommittee, which shall have equal Energy Section and Segment representation.

In addition, there should be one Information Requirements Subcommittee and one Technical Subcommittee. There may be equal Energy Section and Segment representation on these subcommittees at the Executive Committee's discretion. These subcommittees provide the necessary instructions, documentation and technical guidance to allow for implementation of business practices standards.

The Process Committee shall be comprised of members of the Board and Executive Committee with equal representation from each of the Energy Segments and Sections. Executive Committee processes (Operating Practices) and the processes of committees and task forces established by the Executive Committee should first be approved by the Process Committee and then approved or rejected by the Executive Committee. Board Committee processes may be proposed by the Process Committee and reviewed, modified, approved or rejected by the Board.

The Board on its own motion may also establish, by majority vote, its own procedures from time to time.

No procedure or Operating Practice may be adopted by any committee or subcommittee such that it is in conflict with the governing documents of the Standards Organization. A procedure or process deemed to be in conflict with the governing documents may be appealed by any standards organization member to the Process Committee. Upon such appeal, the Process Committee will convene and promptly make a determination. Such determination will be reviewed, modified, approved or rejected by the Board at either a regularly scheduled meeting or a special meeting.

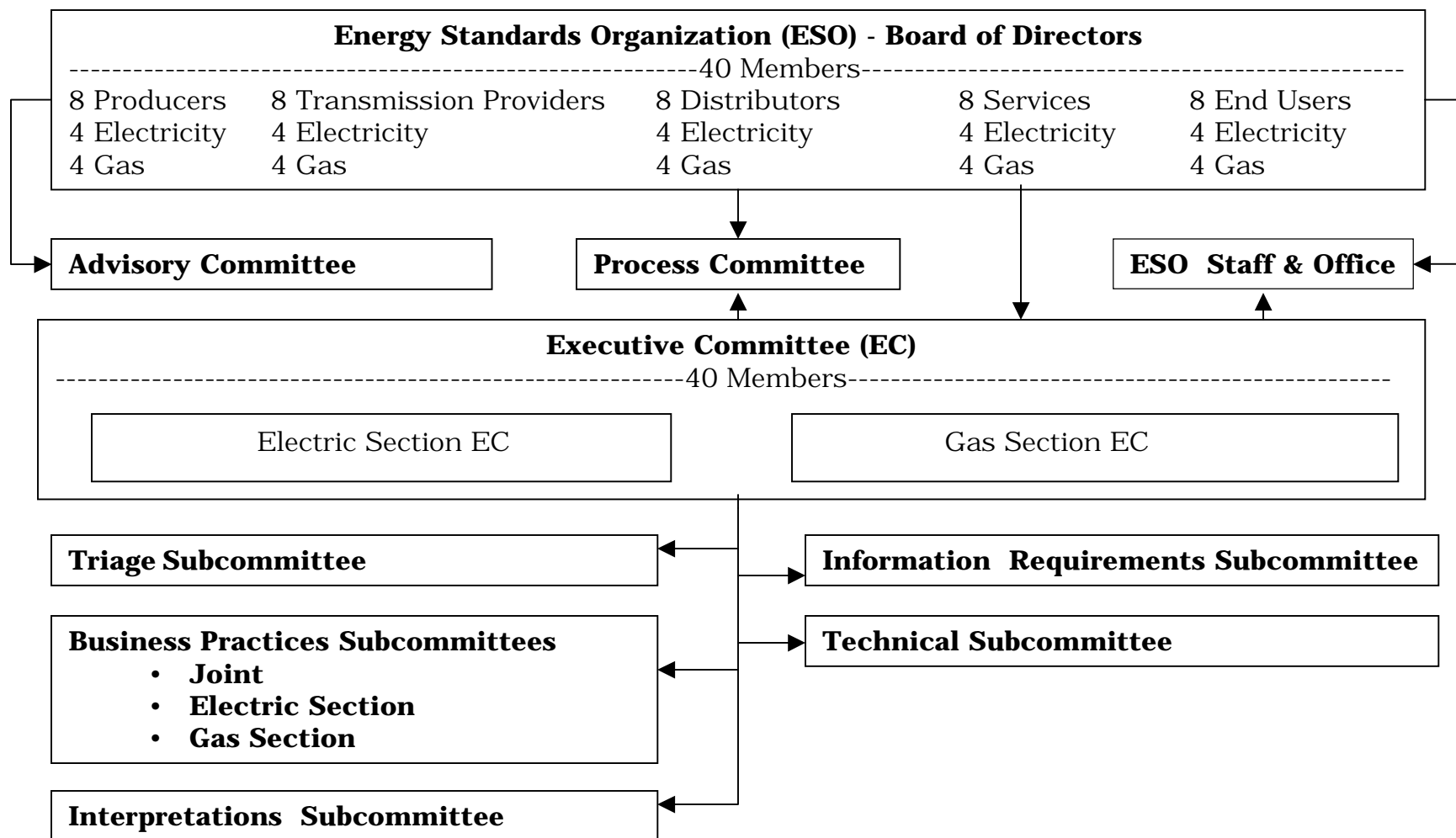
Balanced Voting: All votes in the business practice subcommittees should be by majority, with balanced votes tallied by member in each Energy Section of each Segment. Each Energy Section of each Segment being provided two votes to be apportioned on a no more than one vote per member in attendance at the meeting. Attendance at meetings may be by teleconference or other electronic means. When there are more than two companies within an Energy Section within a segment in attendance, the two votes per section per segment would be apportioned equally among the attendees within each Energy Section and Segment. Abstentions are not counted in the apportionment of votes.

New Elections: The Board of Directors members are elected, according to the given Segment and Energy Section procedures, from the membership of the given Segment and Energy Section. Terms are two years, and are initially staggered within Segment and Energy Section. The Executive Committee members are elected, according to the given Segment and Energy Section procedures, from the membership of the given Segment and Energy Section. Terms are three years, and are initially staggered within Segment and Energy Section, similar to Board procedures.

Funding:

1. Dues remain at \$5000 per membership.
2. Sponsorship Dollars are solicited with no guarantee that they will be credited against future dues.

Straw Man of an Energy Standards Organization Governance Structure



Straw Man of an Energy Standards Organization Governance Structure

Energy Standards Organization - Board of Directors				
-----40 Members-----				
8 Producers	8 Transmission Providers	8 Distributors	8 Services	8 End Users
4 Electricity 4 Gas	4 Electricity 4 Gas	4 Electricity 4 Gas	4 Electricity 4 Gas	4 Electricity 4 Gas

Voting Rules: *Simple Majority on all other than governance issues (bylaws, certificate changes)
30/4/2 for governance (76%)*

Elections: *Segment and Energy Section determined (Board ratified) nomination process
Segment and Energy Section determined (Board ratified) election process
Elections administered by Energy Standards Organization office
First elections to take place for members once organization is created.*

Eligibility: *Member is in good standing, dues paid
Member of the Segment and Energy Section, with declared section interest
No other Board member is from a company in the same corporate family*

Meetings: *Meetings by teleconference permitted
Attendance in person at 50% of Board meetings in order to retain seat.
Attendance threshold is measured twice yearly (March 31 and September 30 for the preceding twelve months).*

Straw Man of an Energy Standards Organization Governance Structure

Executive Committee (EC)				
-----40 Members-----				
8 Producers	8 Transmission Providers	8 Distributors	8 Services	8 End Users
4 Electricity	4 Electricity	4 Electricity	4 Electricity	4 Electricity
4 Gas	4 Gas	4 Gas	4 Gas	4 Gas

Voting Rules: Majority vote on all procedural matters (i.e., other than standards and interpretations passage)
 27/4/2 for standards and interpretations passage (68%)
 A 27/4/2 vote is required before a recommendation from the committee level may be voted upon by a section as a gas or electric only standard
 Section passage of gas or electric only standard requires a 14/2 vote. Upon passage of gas or electric only standard which differs from the recommendation passed to the section, a motion for reconsideration of section assignment can be made (at the same meeting). The reconsideration process is described on page 6 of the **"Draft Strawman for an Energy Industry Standards Organization"**

Elections: Segment and Energy Section determined (Board ratified) nomination process,
 Segment and Energy Section determined (Board ratified) election process
 Election administered by Energy Standards Organization office
 First election to take place for members once organization is created..

Eligibility: Member is in good standing, dues paid.
 Member of the segment, with declared section interest.
 EC members may be from same corporate family - must be from different company

Meetings: Meetings by teleconference permitted.
 Attendance in person at 50% of EC meetings in order to retain seat.
 Attendance threshold is measured twice yearly (March 31 and September 30) for the preceding 12 months.

Straw Man of an Energy Standards Organization Governance Structure

Triage Subcommittee				
2 Producers	2 Transmission Providers	2 Distributors	2 Services	2 End Users
1 Electricity	1 Electricity	1 Electricity	1 Electricity	1 Electricity
1 Gas	1 Gas	1 Gas	1 Gas	1 Gas

Voting Rules: *Simple Majority*

Leadership: *Members selected from EC, EC Alternates or Board. Each Energy Section and Segment Triage Subcommittee member is elected by its Energy Section and Segment members.*

Reports to EC: *Recommends request processing disposition to the EC. The recommendation includes priority and assignment to a Committee/Subcommittee/Task Force. Recommendations made with respect to:*

- 1. request is/is not within scope,*
- 2. is natural gas only, electricity only, joint gas and electric development effort,*
- 3. priority to be assigned to the processing of the request*
- 4. assignment to a subcommittee.*

EC votes through a simple majority to accept or modify Triage recommendation.

Straw Man of an Energy Standards Organization Governance Structure

Business Practices Subcommittees		
Gas Business Practices	Electric Business Practices	Joint Business Practices
5 Chairs:		
1 Gas Producer	1 Electricity Producer	1 Gas & 1 Electricity Producer
1 Gas Distributor	1 Electricity Distributor	1 Gas & 1 Electricity Distributor
1 Gas Transmission Provider	1 Electricity Transmission Pr.	1 Gas & 1 Electricity Trans. Pr.
1 Gas End User	1 Electricity End User	1 Gas & 1 Electricity End User
1 Gas Services	1 Electricity Services	1 Gas & 1 Electricity Services
Balanced Voting (Maximum Number of Votes per Energy Section and Segment to be cast, one vote per company):		
2 Gas Producer	2 Electricity Producers	2 Gas & 2 Electricity Producers
2 Gas Distributor	2 Electricity Distributor	2 Gas & 2 Electricity Distributors
2 Gas Transmission Provider	2 Electricity Transmission Pr.	2 Gas & 2 Electricity Trans. Pr.
2 Gas End Users	2 Electricity End User	2 Gas & 2 Electricity End Users
2 Gas Services	2 Electricity Services	2 Gas & 2 Electricity Services

- Voting Rules:*** *Balanced Voting, requires participation, meetings by teleconference to increase participation. One individual voting per company. Individuals must be present to cast votes.*
- Leadership:*** *Chairs selected from EC, EC Alternates or Board serve subject to the concurrence of their segment/section as applicable.*
- Reports to EC:*** *Accepts requests as assigned by the EC. Resulting, proposed, standards are considered recommendations to the EC. The standards may be considered by other subcommittees to ensure that the recommendations that are brought before the EC are fully staffed..*
EC has final (pre-ratification) say on wording and passage/non-passage of recommendation.
- Membership:*** *Any interested party regardless of membership in the organization.*

Straw Man of an Energy Standards Organization Governance Structure

Interpretations Subcommittee				
2 Producers	2 Transmission Providers	2 Distributors	2 Services	2 End Users
1 Electricity 1 Gas	1 Electricity 1 Gas	1 Electricity 1 Gas	1 Electricity 1 Gas	1 Electricity 1 Gas

Voting Rules: *Simple Majority*

Leadership: *Members from EC, EC Alternates or Board. Each Energy Section and Segment Interpretations Committee member is elected by their Energy Section and Segment members.*

Reports to EC: *Receives requests for Interpretations submitted to ESO Office. Processes requests and recommends disposition to the EC. EC votes on Interpretations according to all the same procedures as apply to Standards*

Straw Man of an Energy Standards Organization Governance Structure

Process Committee

Chair: Elected from among Members of Board, EC, and EC Alternates

Membership: Any interested party, regardless of membership in the organization

Voting Rules: *Simple Majority*

Leadership: *Chair is elected from among Board, EC, and EC Alternates*

Reports to EC: *Recommends ESO Operating Practices to EC.*

Reports to Board: *Reviews complaints as to application of Section election procedures. Also reviews appeals of procedures that a party determines are in conflict with the governance documents.*

Straw Man of an Energy Standards Organization Governance Structure

Information Requirements Subcommittee

Chair: Elected from among Members of Board, EC, and EC Alternates

Membership: Any interested party, regardless of membership in the organization

***Voting Rules:** Simple Majority.*

***Leadership:** Chair is elected from among EC and EC Alternates. There may be other co-chairs.*

***Reports to EC:** Prepares recommendations for EC review to implement information requirements for EDI, flat files, web posting and interactive web transactions corresponding to a given business business practices.*

Technical Subcommittee

Chair: Elected from among Members of Board, EC, and EC Alternates

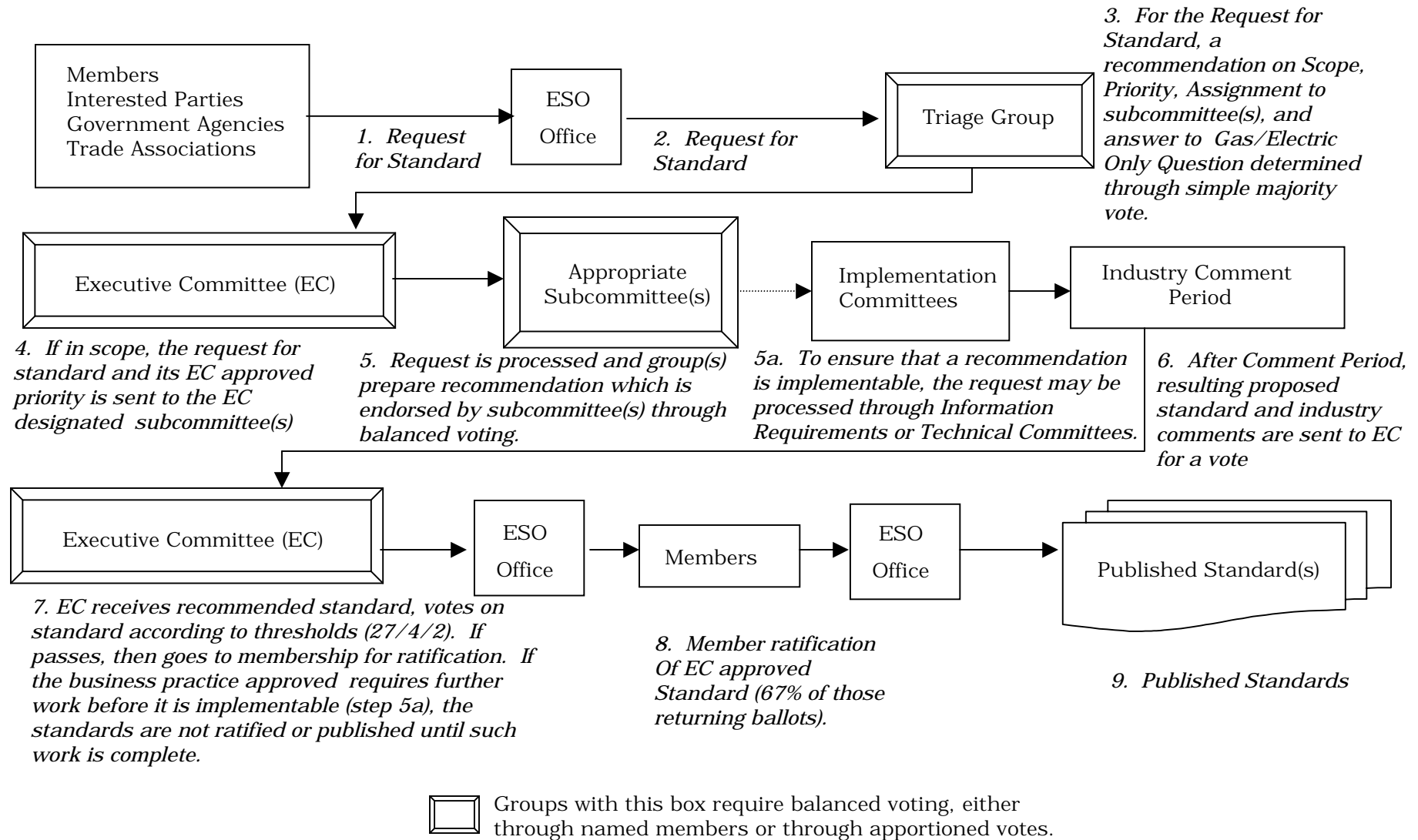
Membership: Any interested party regardless of membership in the organization

***Voting Rules:** Simple Majority.*

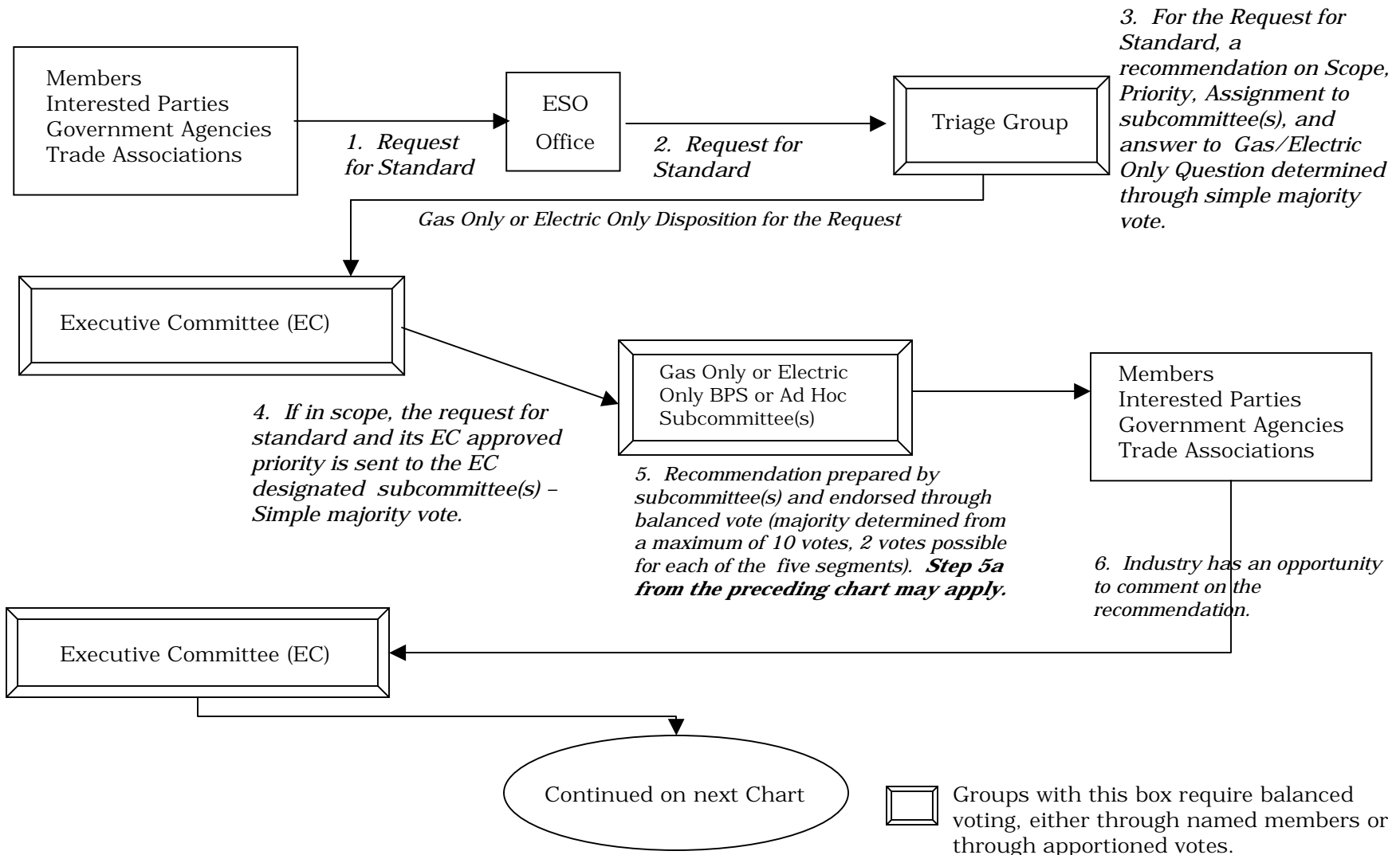
***Leadership:** Chair is elected from among EC and EC Alternates. There may be other co-chairs.*

***Reports to EC:** Prepares recommendations for EC review to implement technical mappings for EDI corresponding to a given business practice standard or recommended standard.*

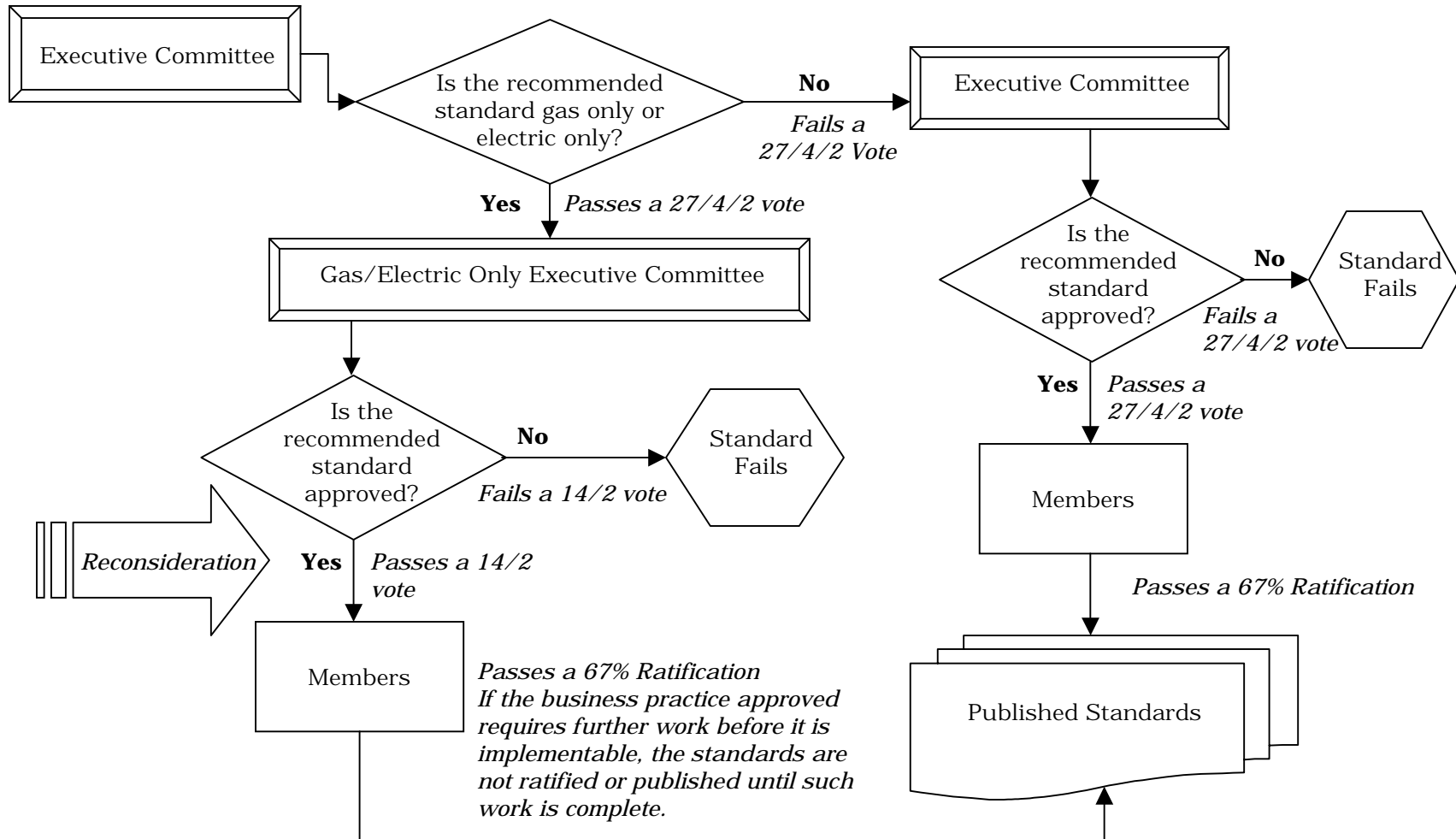
Straw Man Development Final Draft - August 28, 2000 Generic Standards Process



Straw Man of an Energy Standards Organization Gas Only or Electric Only Standards Process - Chart 1 of 2



Straw Man of an Energy Standards Organization Gas Only or Electric Only Standards Process - Chart 2 of 2



Straw Man of an Energy Standards Organization Reconsideration of Section Assignment Process

